

T835 DIY DMM

- Low Cost
- Temperature
- Continuity
- Diode
- Data Hold



Technical Specification	
DC Voltage	200,2,20,200,600V
AC Voltage	200,600V
DC Current	200μ,2m,20m,200m,10A
Resistance	200,2K,20K,200K,20MΩ
Temperature	-20°C to 750°C
Accuracy	
DC Voltage	± 0.5% + 2 Digit
AC Voltage	± 1.2% + 10 Digit
DC Current	± 1.5% + 2 Digit
Resistance	± 0.8% + 2 Digit
Temperature	± 1% + 3 Digit
Protection	
DC Voltage	600V DC / 600V AC RMS
AC Voltage	600V DC / 600V AC RMS
DC Current	0.25A 250V 10A UNFUSED
Resistance	500V DC / 500V AC RMS
Thermocouple	-20°C to 200°C
Fuse	250mA 250V (20x5)mm

Model Specification	
Accessories	K-type Thermocouple
Dimensions (mm)	138(L) x 72(W) x 38(H)
Power Source	9V Battery
Weight	153g

T1300H Electronic DMM

- Low Cost
- Transistor
- Diode
- Continuity



Technical Specification	
DC Voltage	200m,2,20,200,600V
AC Voltage	200,600V
DC Current	200μ,2m,20M,200M,10A
Resistance	200,2K,20K,200K,2000MΩ
Accuracy	
DC Voltage	±0,5% + 1 Digit
AC Voltage	±1,2% + 10 Digit
DC Current	200μ-200mA ±1,2%+2 Dig 10a ±2,0% + 5 Dig
Resistance	±0,8% + 5 Digit
Diode	±2,8V
Protection	
AC/DC Voltage	600V DC/AC RMS
AC/DC Current	200mA /250V FUSED
Resistance	250V DC/AC RMS <10 sec.
Fuse	250mA 250V (20x5)mm

Model Specification	
Dimensions (mm)	138(L) x 72(W) x 38(H)
Power Source	9V Battery
Weight	135g

T2400TH Hobbyist DMM

- Low cost
- Temperature
- Diode test
- Continuity



Technical Specification	
DC Voltage	200m,2,20,200,600V
AC Voltage	200,600V
Resistance	200,2K,20K,200K,20MΩ
DC Current	200μ,2m, 20m, 200m,10A
Temperature	-20°C to 750°C K-type 0°C to 40°C Built in sensor
Continuity	Buzzer sounds below 20Ω
Diode	2,8 V max
Accuracy	
DC Voltage	±0,5% + 1 Digit
AC Voltage	±1,2% + 10 Digit
Resistance	±0,8% + 3 Digit
DC Current	±1,2% + 2 Digit
Temperature	(-20°C to 16°C) 401 to 750°C ± 2,5% 17 to 400°C ± 1% (400°C to 1000°C) 1,5% + 10°C
Built in Sensor	(0°C to 40°C) ±2°C
Protection	
DC Voltage	600V DC/AC RMS
AC Voltage	600V DC/AC RMS
Resistance	250V DC/AC RMS
Fuse	250mA 250 (20x5)mm

Model Specification	
Accessories	Temp Bead Probe
Dimensions (mm)	138(L) x 72(W) x 38(H)
Power Source	9V Battery
Weight	153g

T1504 Auto Ranging DMM

- Low cost
- Continuity
- Diode
- Capacitance
- Frequency
- Data hold
- Temperature



Technical Specification	
DC voltage	400m,4,40,400,600v
AC voltage	4,40,400,600v
AC/DC current	400μ,4000μ,40m,200m,10a
Resistance	400,4k,40k,400k,4m,20mΩ
Frequency	10,100,1K,10K,100K, 1M,5MHZ
Capacitance	4n,40n,400n,4μ,40μ,100μF
Accuracy	
DC Voltage	±0,5% + 3 Digit
AC Voltage	±0,8% + 3 Digit
DC Current	±1,2% + 5 Digit
AC Current	±1,5% + 5 Digit
Resistance	±1,2% + 2 Digit
Frequency	±1,0% +5 Digit Vpp 600mV
Capacitance	±3,0% + 5 Digit
Temperature	-20°C to 750°C -20° to 400°C ± 1.0% 401 To 750°C ± 3.0%
Protection	
AC/DC Voltage	600V DC/AC RMS
AC/DC Current	400mA FUSED 10A 15 sec. FUSED
Resistance	250VDC/AC RMS <30 sec.
Capacitance	250VDC/AC RMS <30 sec.
Frequency	600V dC/ac RMS <30 sec.
Fuse	250mA 250v (20x5)mm

Model Specification	
Accessories	Temp Bead Probe
Dimensions (mm)	138(L) x 72(W) x 38(H)
Power Source	2 x 1.5v AAA Batteries
Weight	153g

T235H Electricians DMM

- Large display
- Temperature
- Data Hold
- Capacitance
- Diode
- Continuity



Technical Specification	
DC Voltage	200mV,2mV,20,200,1000V
AC Voltage	20v,200,750V
DC Current	20mV,200mV,20A
AC Current	200mV, 20A
Resistance	200,20K,200K,20MΩ,200MΩ
Temperature	-40°C -1000°C
Capacitance	20nf,2nf,200µF
Accuracy	
DC Voltage	± 0,5 % + 2 Digit
AC Voltage	± 0,8 % + 5 Digit
DC Current	± 1,5 % + 5 Digit
AC Current	± 1,5 % + 5 Digit
Resistance	± 0,8 % + 5 Digit
Temperature	± 0,8 % + 5 Digit
Capacitance	± 2,5 % + 5 Digit
Protection	
AC/DC Voltage	600V DC/AC RMS
AC/DC Current	200mA /250V FUSED 10A 15sec. UNFUSED
Resistance	250V DC/AC RMS <30 sec.
Capacitance	200mA /250V FUSED
Fuse	250mA 250V SELF RESUME

Model Specification	
Accessories	Temp Bead Probe
Dimensions (mm)	167(L) x 88(W) x 38(H)
Power Source	9V Battery
Weight	350g

T3601 Electricians DMM

- Large display
- Data hold
- Diode
- Continuity



Technical Specification	
DC Voltage	200mV,2V,20V,200,1000V
AC Voltage	20V,200V,750V
DC Current	20mA,200mA,20A
AC Current	20mA,200mA,20A
Resistance	200,2K,20K,200K,2Ω, 200mΩ
Accuracy	
DC Voltage	±0,5% + 1 Digit
AC Voltage	±0,8% + 3 Digit
DC Current	20 - 200mA ±1,5% 20A ±2,0%
AC Current	20mA-200mA ±1,5% 20A ±3,0%
Resistance	200Ω ± 0,8% 2KΩ - 2MΩ ±0,8% 200mΩ ± 5,0%
Protection	
AC/DC Voltage	600V DC/AC RMS
AC/DC Current	2A /250V FUSED 10A 15 sec. UNFUSED
Resistance	250V DC/AC RMS <30 sec.
Fuse	250mA 250V SELF RESUME

Model Specification	
Accessories	Temp Bead Probe
Dimensions (mm)	167(L) x 88(W) x 38(H)
Power Source	9v Battery
Weight	350g

T48 Electronic DMM

- Temperature
- Capacitance
- Transistor
- Diode
- Data hold
- Continuity
- Large display



Technical Specification	
DC Voltage	200m,2,20,200,1000V
AC Voltage	200mV,2,20,200,750V
DC Current	2m,20m,200m,20A
AC Current	2mA,20m,200m,20A
Resistance	200,2K,200K,2M,20M,200MΩ
Frequency	2K,20K,200K 2000K,10MHz
Inductance	2m,20m,200m,2,20H
Temperature	-40 to 1000°C
Capacitance	20n,200n,2µ,20µF,200µF
Accuracy	
DC Voltage	±0,5% + 3 Digit
AC Voltage	±0,8% + 3 Digit
DC Current	2m-20mA ± 0,8% + 3 Digit 20A ± 2,0% + 5 Digit
AC Current	20mA ± 1,0% + 5 Digit 20A ± 3,0% + 10 Digit
Resistance	2000mΩ ± 5,0% + 10 Digit
Inductance	200mH ± 2,5% + 20 Digit
Frequency	±5% + 4 Digit
Temperature	±1,5% + 5 Digit
Capacitance	20nf-20µf ±2,5% +20 Digit
Protection	
AC/DC Voltage	1000V DC/AC RMS
AC/DC Current	200mA/250V FUSED 20A 15sec. FUSED
Resistance	250V DC/AC RMS <30 Sec.
Capacitance	36V DC/AC
Frequency	250V DC/AC RMS <10 Sec.
Fuse	250mA 250V SELF RESUME 12A 250V (20x5)mm

Model Specification	
Accessories	Temp Bead Probe
Dimensions (mm)	189(L) x 97(W) x 35(H)
Power Source	9V Battery
Weight	620g

T7290 Pocket DMM

- Low cost
- 3 1/2 Digit LCD
- Low power consumption
- Diode
- Integral leads
- Continuity



Technical Specification	
AC/ DC Voltage	200m,2,20,200,600V
Resistance	200Ω,2KΩ,20KΩ,200KΩ, 2MΩ,20MΩ
Diode	1,0±0,6 mA 3,2 V max.
Accuracy	
DC Voltage	±0,8% + 1 Digit
AC Voltage	±1,5% + 1 Digit
Resistance	±0,8% + 4 Digit
DC Current	± 2,0% + 2 Digit

Model Specification	
Dimensions (mm)	109(L) x 56(W) x 14(H)
Power Source	2 x 1,5V LR44 (T515Batt)
Weight	110g

TBM251 General Purpose DMM

- Bar graph
- Beep guard
- USB Interface
- Rugged construction
- Diode
- Continuity
- Separate battery compartment



Technical Specification

AC/DC Voltage	60m,600m,6,60,600,1000V
AC/DC Current	600µ,6000µ,60m,600m,6,8A
Resistance	600,6K,60K,600K,6M,60MΩ
Frequency	5Hz - 1MHz
Accuracy	
DC Voltage	±0,2% + 3 Digit
AC Voltage	60mV - 600mV - 1% + 5 Digit 1V - 1000V - 1,4% + 5 Digit
DC Current	
DC Current	±0,5% + 3 Digit
AC Current	
AC Current	±1,0% + 3 Digit
Resistance	
Resistance	±1,2% + 4 Digit
Frequency	
Frequency	±0,003% + 2 Digit
Protection	
AC/DC Voltage	1050Vrms,1450V Peak
AC/DC Current	0,63A/500V FUSED 10A/600V FUSED
Resistance	0,45V DC Typical
Input Warning	✓
Transient	6,5KV LIGHTNING SURGE
Protection	(1,2/50 µs) SURGE

Model Specification

Accessories	Temp Probe
Optional Accessories	USB Cable & Software (TBU20X) See PG 6 for USB Adaptor Magnetic Hanger (TBMH01) See Pg 5
Dimensions (mm)	161(L) x 80(W) x 50(H)
Power Source	9V Battery
Weight	340g

TBM252 Electronic General Purpose DMM

- Bar graph
- Beep guard
- USB Interface
- Temperature
- EF detection
- Separate battery compartment



Technical Specification

AC/DC Voltage	60m,600m,6,60,600,1000V
AC/DC Current	600µ,6000µ,60m,600m,6,8A
Resistance	600,6K,60K,600K,6M,60MΩ
Frequency	5Hz - 1MHz
Temperature	-50°C - 1000°C
Capacitance	60n,600n,6µ,60µ,600µ,3000µF
Accuracy	
DC Voltage	±0,2% + 3 Digit
AC Voltage	60mV - 600mV - 1% + 5 Digit 1V - 1000V - 1,4% + 5 Digit
Auto Check	
Auto Check	1V - 1000 V AC/DC
DC Current	
DC Current	±0,5% + 3 Digit
AC Current	
AC Current	±1,0% + 3 Digit
Resistance	
Resistance	±1,2% + 4 Digit
Frequency	
Frequency	±0,003% + 2 Digit
Capacitance	
Capacitance	±2,0% + 5 Digit
Protection	
AC/DC Voltage	1050Vrms,1450V Peak
AC/DC Current	0,63A/500V FUSED 10A/600V FUSED
Resistance	0,45V DC Typical
Input Warning	✓
Transient	6,5KV LIGHTNING SURGE
Protection	(1,2/50 µs) SURGE

Model Specification

Accessories	Temp Probe
Optional Accessories	USB Cable & Software (TBU20X) See PG 6 for USB Adaptor Magnetic Hanger (TBMH01) See Pg 5
Dimensions (mm)	161(L) x 80(W) x 50(H)
Power Source	9V Battery
Weight	340g

TBM255 Auto Check DMM

- Bar graph
- Backlight
- Beep guard
- USB Interface
- Temperature
- Min/Max record
- EF detection
- Separate battery compartment



Technical Specification

AC/DC Voltage	60m,600m,6,60,600,1000V
AC/DC Current	600µ,6000µ,60m,600m,6,8A
Resistance	600,6K,60K,600K,6M,60MΩ
Frequency	5Hz - 1MHz
Temperature	-50°C - 1000°C
Capacitance	60n,600n,6µ,60µ,600µ,3000µF
Accuracy	
DC Voltage	±0,2% + 3 Digit
AC Voltage	60mV - 600mV - 1% + 5 Digit 1V - 1000V - 1,4% + 5 Digit
Auto Check	
Auto Check	1V - 1000 V AC/DC
DC Current	
DC Current	±0,5% + 3 Digit
AC Current	
AC Current	±1,0% + 3 Digit
Resistance	
Resistance	±1,2% + 4 Digit
Frequency	
Frequency	±0,003% + 2 Digit
Capacitance	
Capacitance	±2,0% + 5 Digit
Protection	
AC/DC Voltage	1050Vrms,1450V Peak
AC/DC Current	0,63A/500V FUSED 10A/600V FUSED
Resistance	0,45V DC Typical
Input Warning	✓
Transient	6,5KV LIGHTNING SURGE
Protection	(1,2/50 µs) SURGE

Model Specification

Accessories	Temp Probe
Optional Accessories	USB Cable & Software (TBU20X) See PG 6 for USB Adaptor Magnetic Hanger (TBMH01) See Pg 5
Dimensions (mm)	161(L) x 80(W) x 50(H)
Power Source	9V Battery
Weight	340g

TBM257 Auto Check DMM



- Bar graph
- Backlight
- Beep guard
- USB Interface
- Temperature
- Min/Max record
- EF detection
- Separate battery compartment



Technical Specification

AC/DC Voltage	60m,600m,6,60,600,1000V
AC/DC Current	600µ,6000µ,60m,600m,6,8A
Resistance	600,6K,60K,600K,6M,60MΩ
Frequency	5Hz - 1MHz
Temperature	-50°C - 1000°C
Capacitance	60n,600n,6µ,60µ,600µ,3000µF
Accuracy	
DC Voltage	±0,2% + 3 Digit
AC Voltage	60mV - 600mV - 1% + 5 Digit 1V - 1000V - 1,4% + 5 Digit
Auto Check	
Auto Check	1V - 1000 V AC/DC
DC Current	
DC Current	±0,5% + 3 Digit
AC Current	
AC Current	±1,0% + 3 Digit
Resistance	
Resistance	±1,2% + 4 Digit
Frequency	
Frequency	±0,003% + 2 Digit
Capacitance	
Capacitance	±2,0% + 5 Digit
Protection	
AC/DC Voltage	1050Vrms,1450V Peak
AC/DC Current	0,63A/500V FUSED 10A/600V FUSED
Resistance	0,45V DC Typical
Input Warning	✓
Transient	6,5KV LIGHTNING SURGE
Protection	(1,2/50 µs) SURGE

Model Specification

Accessories	Temp Probe
Optional Accessories	USB Cable & Software (TBU20X) See PG 6 for USB Adaptor Magnetic Hanger (TBMH01) See Pg 5
Dimensions (mm)	161(L) x 80(W) x 50(H)
Power Source	9V Battery
Weight	340g

TBM805 General Purpose DMM

- Splash proof
- Beep guard
- Rugged construction
- Diode
- Continuity
- Data hold
- Min/max
- Relative zero



Technical Specification

AC/DC Voltage	400m,4,40,400,1000V
AC/DC Current	400μ,4000μ,40m,400m,4,10A
Resistance	400,4K,40K,400K,4M,40MΩ
Frequency	50,500,5K,50K,500K,1MHz
Capacitance	500n,5μ,50μ,500μ,3000μF
Accuracy	
DC Voltage	±1,0%+4 Digit
AC Voltage	4 -400V ±1,5% + 5 Digit 1000V ±4,0% + 5 Digit
DC Current	±1,2% + 3 Digit
AC Current	±1,8% + 4 Digit
Resistance	±2,0% + 4 Digit
Frequency	±0,5% + 4 Digit
Capacitance	±3,5% + 6 Digit
Protection	
AC/DC Voltage	1050Vrms,1450V Peak
AC/DC Current	0,5A/250V FUSED 15A/250V FUSED
Resistance	600V DC/AC RMS
Input Warning	✓
Transient	6.5KV LIGHTNING SURGE
Protection	(1.2/50 μs) FUSE

Model Specification

Dimensions (mm)	198(L) x 97(W) x 55(H)
Power Source	2 x 1.5V AAA Batteries
Weight	396g

TBM807 Electricians DMM



- Temperature
- Splash proof
- Beep guard
- Diode
- Continuity
- Data hold
- Min/max
- Relative zero
- Back-lighted display



Technical Specification

AC/DC Voltage	400m,4,40,400,1000V
AC/DC Current	400μ,4000μ,40m,400m,4,10A
Resistance	400,4K,40K,400K,4M,40MΩ
Frequency	50,500,5K,50K,500K,1MHz
Temperature	-20°C to 300°C
Capacitance	500n,5μ,50μ,500μ,3000μF
Accuracy	
DC Voltage	±1,0%+4 Digit
AC Voltage	4 -400V ±1,5% + 5 Digit 1000V ±4,0% + 5 Digit
DC Current	±1,2% + 3 Digit
AC Current	±1,8% + 4 Digit
Resistance	±2,0% + 4 Digit
Frequency	±0,5% + 4 Digit
Temperature	±2,0% + 3°C
Capacitance	±3,5% + 6 Digit
Protection	
AC/DC Voltage	1050Vrms,1450V PEAK
AC/DC Current	0,5 A/250V FUSED 15A /250V FUSED
Resistance	600V DC/AC RMS
Input Warning	✓
Transient	6.5KV LIGHTNING SURGE
Protection	(1.2/50 μs)

Model Specification

Accessories	Temp Probe
Dimensions (mm)	198(L) x 97(W) x 55(H)
Power Source	2 x 1.5V AAA Batteries
Weight	396g

TBM685 Auto Check DMM

- CAT IV 1000V
- EMF detection
- Auto power off
- Overmould
- Data hold
- Continuity
- Diode
- Separate battery compartment



Technical Specification

AC/DC Voltage	6000m,6,60,600,1000v
Resistance	6K, 60K, 600K, 6M
Capacitance	100n, 1000n, 10μ, 100μ, 2000μF
Accuracy	
DC Voltage	6000mV 0,8% + 2 Digit 1000V 1,5% + 8 Digit
AC Voltage	6000mV 1,5% + 3 Digit 1000V 2,8% + 8 Digit
Resistance	6kΩ 0,9% + 4 Digit 6MΩ 12, % + 4 Digit
Protection	
Transient	12kV LIGHTNING SURGE
Protection	(1.2/50 μs)

Auto check - automatically selects measurement function of DCV, ACV or resistance based on input via the test leads

Model Specification

Dimensions (mm)	173(L) x 83(W) x 48(H)
Power Source	9V Battery
Weight	300g

TBM525 Data Logger



- Datalogger, 87 000 Points single display mode
- Datalogger, 43 000 Points dual display mode
- Backlight
- 1000V AC/DC
- USB Interface
- Beep guard
- Auto check
- EF detection
- Temperature



Technical Specification

AC/DC Voltage	60m,600m,6,600,1000V
AC/DC Current	600μ,6000μ,60m,600m, 6,10A
Resistance	0.1Ω - 60MΩ
Frequency	5Hz to 1MHz
Capacitance	60n,600n,6μ,60μ,600μ,25mF
Temperature	-50°C to 1000°C
Accuracy	
AC/DC Voltage	0.08% + 2 Digit
AC/DC Current	0.8% + 6 Digit
Resistance	0.8% + 10 Digit
Frequency	0.004% + 4 Digit
Capacitance	5.0% + 5 Digit
Temperature	0.3% + 2°C
Protection	
DC/AC Voltage	1050Vrms,1450V PEAK
AC/DC Current	0.44A/1000V AC Fuse 11A 1000V AC Fuse (IR 20kA)
Resistance	1.2V DC OPEN CIRCUIT
Input Warning	✓
Transient	12KV SURGE
Protection	(1.2/50 μs) SURGE

Model Specification

Accessories	Temp Probe
Optional Accessories	USB Cable & Software (TBU86X) See PG 6 for USB Adaptor Magnetic Hanger (TBMH01) See Pg 5
Dimensions (mm)	198(L) x 97(W) x 55(H)
Power Source	9V Battery
Weight	430g

TBM811 / TBM811XEX General Purpose DMM

- Splash/Drop Proof
- 1000V AC/DC
- USB Interface
- Dual display
- Back light

TBM811XEX



Intrinsically Safe
1A/1kV (IR10kA) for μ A and
mA (1000V HRC Fuse)

11A/1kV (IR20kA) for A (1000V HRC Fuse)

These meters comply to IEC SANS 60079-0:2000 and IEC SANS 60079-11:1999, which is an electrical apparatus for explosive gas atmospheres. Part 0 (general requirements) and Part 1 (intrinsic). The approved explosive protection rating of this equipment is suitable for use in Zone 1 hazardous area. Group I (coal mines) underground and Group II (surface).

Markings on meter:

Ex ib I Mb

Ex ib IIC Gb

SAEx MS/09-200X.

Ex ib falls under Zone 1 which is an area where flammable gas can occur in normal operating conditions.

Technical Specification

DC/AC Voltage	60m,600m,6,600,1000V
DC/AC Current	600 μ ,6000 μ ,60m,600m, 6,10A
Resistance	0.1 Ω - 60M Ω
Frequency	5Hz - 1MHz
Capacitance	60n,600n,6 μ ,60 μ ,600 μ ,20mF
Accuracy	
DC Voltage	0.08% + 2 Digit
AC Voltage	2.0% + 3 Digit
DC Current	0.2% + 4 Digit
AC Current	1.0% + 4 Digit
Resistance	1.5% + 5 Digit
Frequency	0.004% + 4 Digit
Capacitance	5.0% + 5 Digit
Protection	
DC/AC Voltage	1050Vrms,1450V PEAK
AC/DC Current	0.44A/1000V Fuse (IR10kA) 11A/1000V Fuse (IR20kA)
Resistance	1.2V DC OPEN CIRCUIT
Input Warning	✓
Transient	12kV SURGE
Protection	(1.2/50 μ s) SURGE

Model Specification

Optional Accessories	USB Cable & Software TBU86X See PG 6 for USB Adaptor Magnetic Hanger (TBMH01)
Dimensions (mm)	208(L) x 103(W) x 64.5(H)
Power Source	9V Battery
Weight	635g



TBM811XEX



TBMH01
Magnetic Hanger
(Optional Accessory)

TBM812 / TBM812XEX General Purpose DMM

- Splash/Drop Proof
- 1000V AC/DC
- USB Interface
- Dual display
- Back light

TBM812XEX



Intrinsically Safe
1A/1kV (IR10kA) for μ A and
mA (1000V HRC Fuse)

11A/1kV (IR20kA) for A (1000V HRC Fuse)

These meters comply to IEC SANS 60079-0:2000 and IEC SANS 60079-11:1999, which is an electrical apparatus for explosive gas atmospheres. Part 0 (general requirements) and Part 1 (intrinsic). The approved explosive protection rating of this equipment is suitable for use in Zone 1 hazardous area. Group I (coal mines) underground and Group II (surface).

Markings on meter:

Ex ib I Mb

Ex ib IIC Gb

SAEx MS/09-291X.

Ex ib falls under Zone 1 which is an area where flammable gas can occur in normal operating conditions.

Technical Specification

DC/AC Voltage	60m,600m,6,600,1000V
DC/AC Current	600 μ ,6000 μ ,60m,600m, 6,10A
Resistance	0.1 Ω - 60M Ω
Frequency	5Hz - 1MHz
Capacitance	60n,600n,6 μ ,60 μ ,600 μ ,20mF
Accuracy	
DC Voltage	0.08% + 2 Digit
AC Voltage	2.0% + 3 Digit
DC Current	0.2% + 4 Digit
AC Current	1.0% + 4 Digit
Resistance	1.5% + 5 Digit
Frequency	0.004% + 4 Digit
Capacitance	5.0% + 5 Digit
Protection	
DC/AC Voltage	1050Vrms,1450V PEAK
AC/DC Current	0.44A/1000V Fuse (IR10kA) 11A/1000V Fuse (IR20kA)
Resistance	1.2V DC OPEN CIRCUIT
Input Warning	✓
Transient	12kV SURGE
Protection	(1.2/50 μ s) SURGE

Model Specification

Optional Accessories	USB Cable & Software TBU86X See PG 6 for USB Adaptor Magnetic Hanger (TBMH01)
Dimensions (mm)	208(L) x 103(W) x 64.5(H)
Power Source	9V Battery
Weight	635g

True
RMS



TBM812XEX



TBMH01
Magnetic Hanger
(Optional Accessory)

TBM829 Professional DMM



- Splash/Drop Proof
- 1000V AC/DC
- USB Interface
- Dual display
- Back light
- Non-contact EF
- Auto check
- Dual temperature
- Crest (Peak-hold)



Technical Specification	
DC/AC Voltage	60m,600m,6,600,1000V
DC/AC Current	600μ,6000μ,60m,600m, 6,10A
Resistance	0.1Ω - 60MΩ
Frequency	5Hz - 1MHz
Capacitance	60n,600n,6μ,60μ,600μ,20mF
Temperature	-50°C - 1000°C
Accuracy	
DC Voltage	0.08% + 2 Digit
AC Voltage	2.0% + 3 Digit
DC Current	0.2% + 4 Digit
AC Current	1.0% + 4 Digit
Resistance	1.5% + 5 Digit
Frequency	0.004% + 4 Digit
Capacitance	5.0% + 5 Digit
Temperature	0.3% + 2°C
Protection	
DC/AC Voltage	1050Vrms,1450V PEAK
AC/DC Current	0.44A/1000V Fuse (IR10kA) 11A/1000V Fuse (IR20kA)
Resistance	1.2V DC OPEN CIRCUIT
Input Warning	✓
Transient	12kV SURGE
Protection	(1.2/50 μs) SURGE

Model Specification

Optional Accessories	USB Cable & Software TBU86X See PG 8 for USB Adaptor Magnetic Hanger (TBMH01) See Pg 7
Dimensions (mm)	208(L) x 103(W) x 64.5(H)
Power Source	9V Battery
Weight	635g

TBM869 Professional DMM



- USB Interface
- 500 000 Count Display
- 100 kHz Bandwidth
- Dual Temperature
- Backlight
- Crest Mode
- Diode
- Continuity
- Duty Cycle
- Data Hold
- Dual Display
- Probe Input Warning



Technical Specification

AC/DC Voltage	500m,5,50,500,1000V
AC/DC Current	500μ,5000μ,50m,500m, 5,10A
Resistance	500,5K,50K,500K,5m,50mΩ
FrequencyLine:	10Hz to 3kHz
Logic:	5Hz to 1MHz
Capacitance	50n,500n,5μ,500μ, 25mf
Temperature	-50 to 1000°C
Accuracy	
DC Voltage	0.02% + 2 Digit
AC Voltage	1.2% + 40 Digit (20Hz-45Hz)
DC Current	0.15% + 20 Digit (0.5% + 50 Digit At 500μA)
AC Current	0.5% + 50 Digit
Resistance	0.07% + 10 Digit
Frequency	0.002% + 4 Digit
Capacitance	0.8% + 3 Digit
Temperature	0.3% + 1.5°C
Protection	
AC/DC Current	0.44A/1000V (IR10kA Fuse) For μA & mA 11A/1000V (IR20kA Fuse)
Other Ranges	1050Vrms, 1450V Peak
Transient	12kV Lightning Surge
Protection	(1.2/50 μs)

Model Specification

Accessories	Temp Probe
Optional Accessories	USB Cable & Software TBU86X See PG 8
Dimensions (mm)	208(L) x 103(W) x 64(H)
Power Source	9V Battery
Weight	635g

T8209 Multipurpose DMM 5-in-1

- Auto ranging
- Test probe input warning lights
- Diode test
- Auto power off
- Backlight



Technical Specification	
DC Voltage	400m,4,40,400,1000V
AC Voltage	4,40,400,750V
AC/DC Current	400μ,400m,10A
Resistance	400,4K,40K,400K,40MΩ
Frequency	9,99~200kHz
Temperature	-20°C to 1000°C Bead Probe
Capacitance	4,40,400n,4μ,40,100μF
Humidity	20~95% RH
Sound Level	40~100dB
Illuminance	1~40000 Lux
Duty Cycle	0,1~99,9%
Accuracy	
DC Voltage	±0,7% + 2 Digit
AC Voltage	±1,0% + 3 Digit
DC Current	±2,0% + 10 Digit
AC Current	±3,0% + 10 Digit
Resistance	±2,0% + 5 Digit
Frequency	±2,0% + 5 Digit
Temperature	±3,0% + 5 Digit
Capacitance	±3,0% + 3 Digit
Humidity	±5,0% RH
Sound Level (dB)	±3,5% at 94dB
Illuminance	±5,0% + 10 Digit
Duty Cycle	±3,0%



Model Specification

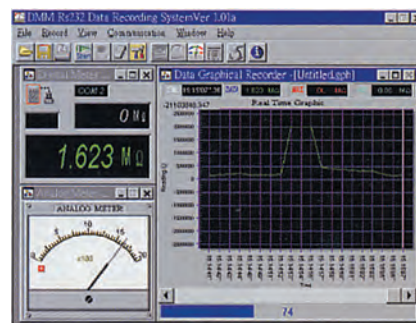
Accessories	Carry Pouch, Temp Probe
Dimensions (mm)	192(L) x 92(W) x 55(H)
Power Source	3 x 1,5AAA Batteries
Weight	400g

TBU

- Optical interface adaptor
- USB Cable and software

Free Software updates available:

www.brymen.com/product-html/software-download/



Cable & Software Specification

Cable & SoftWare (USB PLUG)	DMM
TBU20X	TBM251/252/255/257
TBU86X	TBM811/812/525/829/867/869 Clamp
TBR13X (Serial RS232)	TBM135/155/157
TBRUSB (USB Adaptor)	Fits all TBR RS232 serial plugs