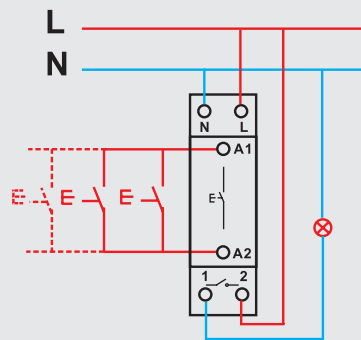


TWST - WiFi Smart Timer



Wiring Diagram



Features

- Locally stored programming
- Countdown timer from 1min up to 23hrs 59mins
- Up to 100 On/Off Programs
- Adjustable settings from daily to day by day
- Devices can be grouped as well as individually named
- Shareable device control via WiFi
- Remote On/Off Switching
- On/off switching can be operated manually via the Pushbutton
- Remote manual control via dry contact input
- Contact position memory in the event of a power failure
- Ideal for switching lighting circuits and low current resistive loads.



App

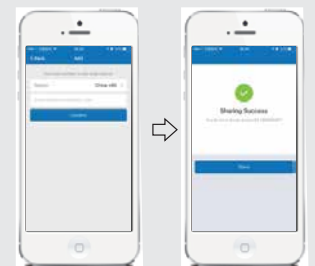
- Use your phone to scan the QR Code
- Download and install the App



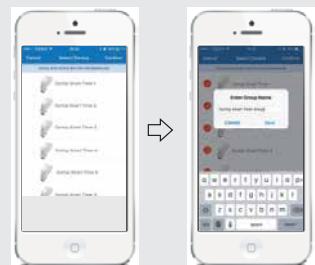
Count Down Timer



Schedule



Share Device



Group device operations

Technical Overview

Feature	Parameter
Rated Voltage	100-240VAC (50-60Hz)
Rated Current	16A @ 250VAC (COS Ø=1)
Contact Configuration	1 NO
Input	Mechanical Pushbutton & Dry Contact Input
WiFi Frequency	2.4GHz

Johannesburg
Tel: (011) 879-6600
Fax: (011) 879-6603

Cape Town
Tel: (021) 594-7100
Fax: (021) 594 7130

Durban
Tel: (031) 492-0481
Fax: (031) 569-9909

Port Elizabeth
Tel: (041) 408-2400
Fax: (041) 453-0336

E-mail: jhb.sales@hellermann.co.za

