



WiFi Smart Timer

TWST - Operating Instructions

1. Wiring Diagram

Connect the products with the power
AC 90-250VAC

2. Download and install App

Connect your phone to local WiFi
Use your phone to scan the QR code below
to Download and install the App



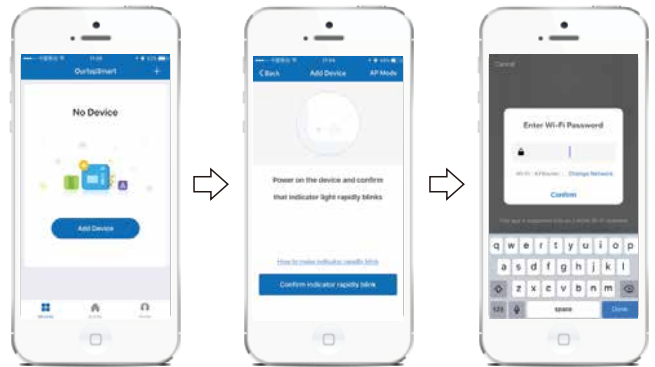
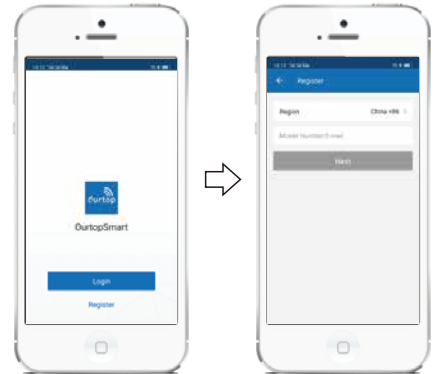
4. Add New Device

Press and hold the button for
about 5 seconds until the
Green LED light blinks fast.



*After holding the switch for 5 seconds, if the LED light is red, press the switch again and you will see the green light blink.

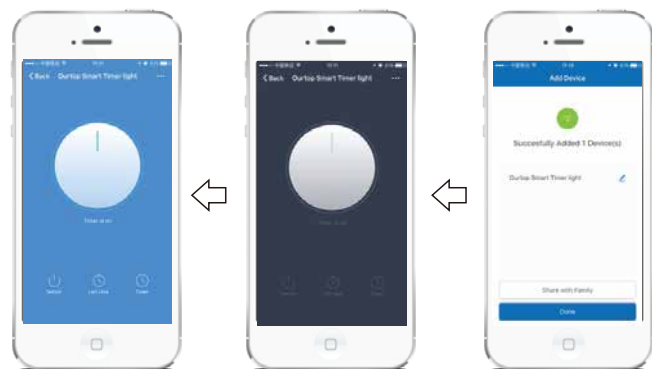
3. Register Account



Click "+" in homepage
or Click Add Device

Confirm

Input WiFi password
and confirm



Now you can control
the switch by App

Click Switch

Click Done

Johannesburg
Tel: (011) 879-6600
Fax: (011) 879-6603

Cape Town
Tel: (021) 594-7100
Fax: (021) 594 7130

Durban
Tel: (031) 492-0481
Fax: (031) 569-9909

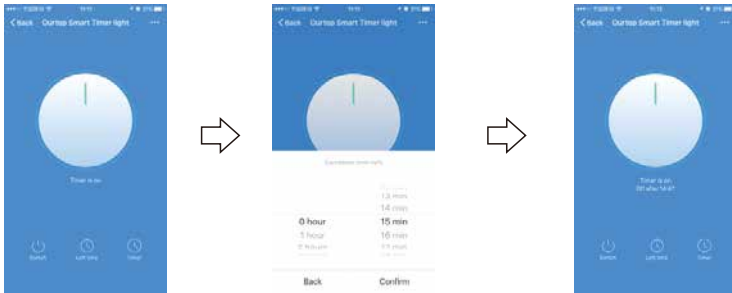
Port Elizabeth
Tel: (041) 408-2400
Fax: (041) 453-0336

E-mail: jhb.sales@hellermann.co.za





5. Count down time

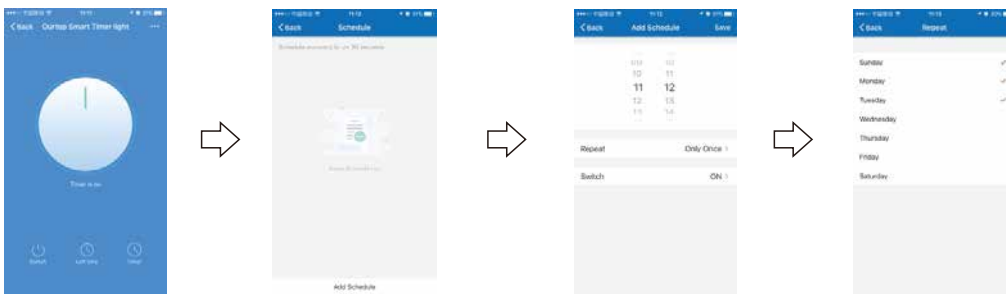


Click "Left time" in the home page to set count down time

Set the Hour and Min, press Confirm

The timer will be ON or OFF, after time is set

6. Set time programs

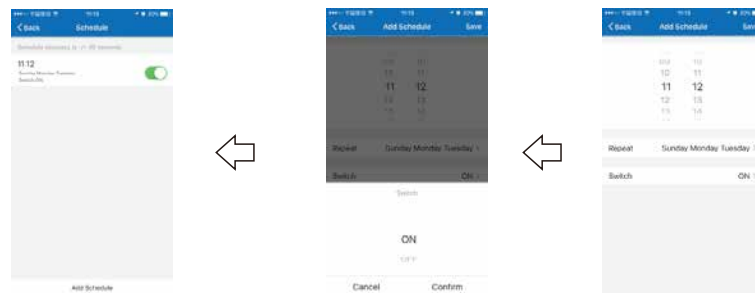


Click "timer" in home page to set the program time

Add Schedule

Set the time hour and Minute, Click "Repeat", to set the date

Select the date, and Click "Back"



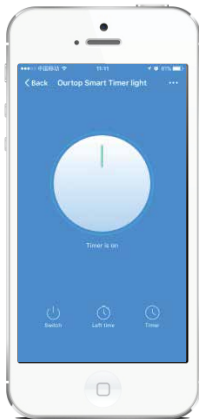
Schedule can be added to

Select ON or OFF, then confirm, and save

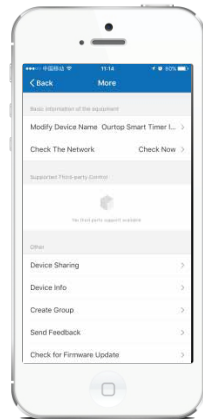
Click the "Switch" to set the ON or OFF



7. Modify Device Name



Click 3 points in the upper right corner

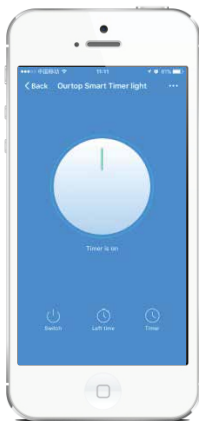


Click "Modify Device Name"

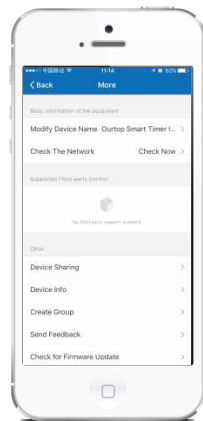


Modify the Name which you want

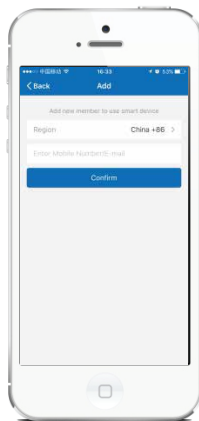
8. Share Device



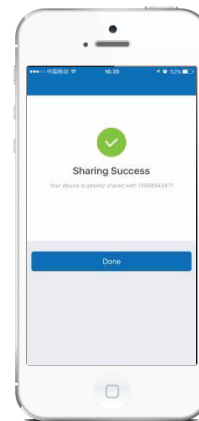
Click 3 points in the upper right corner



Click "Device Sharing"

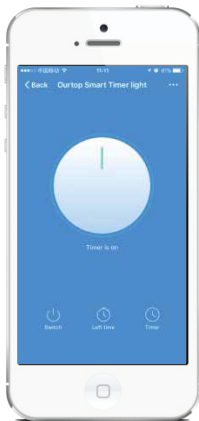


Input the cell phone number which you want to share control with, and "confirm"

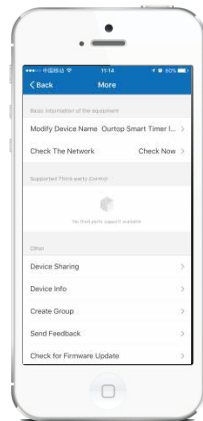


Click "Done", then device will automatically appear in "Devices Sharing"

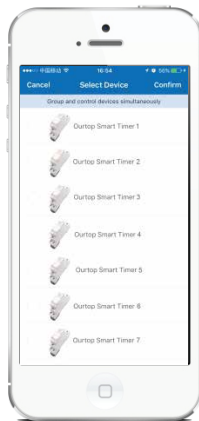
9. Create Group



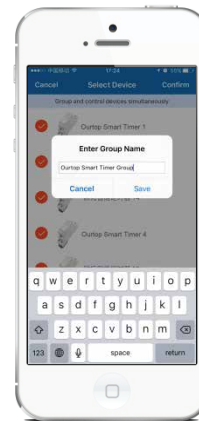
Click 3 points in the upper right corner



Click "Create Group"



Select the device, and confirm

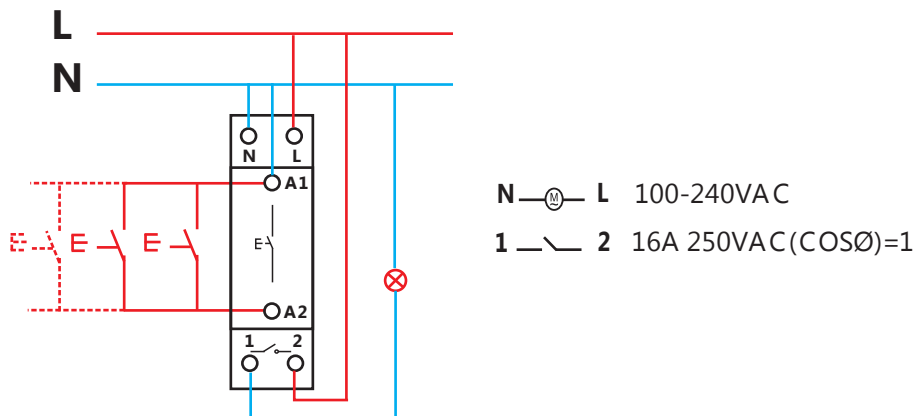


Enter Group Name

10. Specification

- Rated Voltage: 100-240VAC 50-60Hz
- Rated Current: 16A 250VAC (COS = 0.1)
- Contact configuration: 1NO (SPST-NO)
- WiFi Frequency: 2.4GHz
- Mounting: DIN Rail 35 mm (EN 60715)
- Ambient temperature range: -10°C ... +60°C
- Can set 100 On/Off programs one day or per week.
- Count down time, from 1 Min to 23 hours 59 Mins.
- If the product is disconnected from the network, the timer retains all programs set up by Mobile App and works according to the set programs.
- With memory function, when the product contact is in the close state, after the power failure, the product contacts still keep the close state.
- Can also be controlled by buttons from terminal A1 and A2.
- Can be shared with 100 people by Mobile App.
- The timer works with Amazon Alexa and Google Home.

11. Connection Diagrams



12. Dimensions

